

COOPER TEXAS REAL ESTATE HOLDINGS, LLC, 174.77 ACRES VOL. 393, PG. 478 O.P.R.E.C.T.

R.E. MENOTTI 152.00 ACRES VOL. 282, PG. 261 O.P.R.E.C.T.

R.E. MENOTTI 84.40 ACRES VOL. 314, PG. 371 O.P.R.E.C.T.

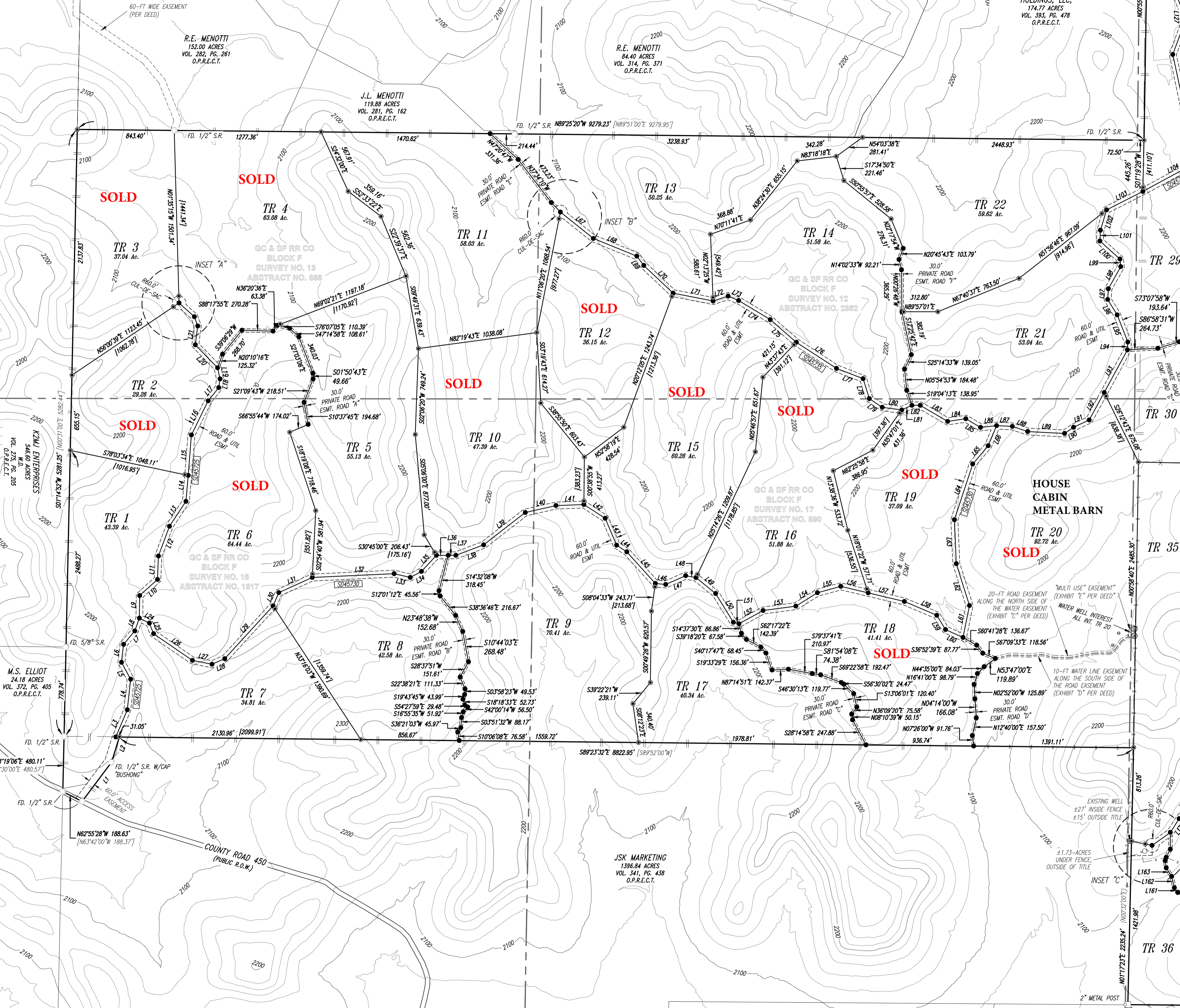
J.L. MENOTTI 119.88 ACRES VOL. 281, PG. 162 O.P.R.E.C.T.

K2M ENTERPRISES 546.60 ACRES VOL. 275, PG. 205 O.P.R.E.C.T.

M.S. ELLIOT 24.18 ACRES VOL. 372, PG. 405 O.P.R.E.C.T.

JSK MARKETING 1396.84 ACRES VOL. 341, PG. 438 O.P.R.E.C.T.

HOUSE CABIN METAL BARN



SOLD

SOLD

SOLD

SOLD

SOLD

SOLD

SOLD

SOLD

SOLD

TR 3  
37.04 Ac.

TR 4  
63.08 Ac.

TR 11  
58.03 Ac.

TR 13  
50.25 Ac.

TR 14  
51.58 Ac.

TR 22  
58.62 Ac.

TR 2  
29.26 Ac.

TR 5  
55.13 Ac.

TR 10  
47.39 Ac.

TR 15  
60.28 Ac.

TR 19  
37.09 Ac.

TR 1  
43.39 Ac.

TR 6  
64.44 Ac.

TR 8  
42.58 Ac.

TR 9  
70.41 Ac.

TR 17  
40.34 Ac.

TR 18  
41.41 Ac.

TR 20  
92.72 Ac.

TR 7  
34.81 Ac.

TR 36

GC & SF RR CO BLOCK F SURVEY NO. 13 ABSTRACT NO. 888

GC & SF RR CO BLOCK F SURVEY NO. 12 ABSTRACT NO. 2352

GC & SF RR CO BLOCK F SURVEY NO. 16 ABSTRACT NO. 1817

GC & SF RR CO BLOCK F SURVEY NO. 17 ABSTRACT NO. 890

COUNTY ROAD 450 (PUBLIC R.O.W.)

20-FT ROAD EASEMENT ALONG THE NORTH SIDE OF THE WATER EASEMENT (EXHIBIT "C" PER DEED)

10-FT WATER LINE EASEMENT ALONG THE SOUTH SIDE OF THE ROAD EASEMENT (EXHIBIT "D" PER DEED)

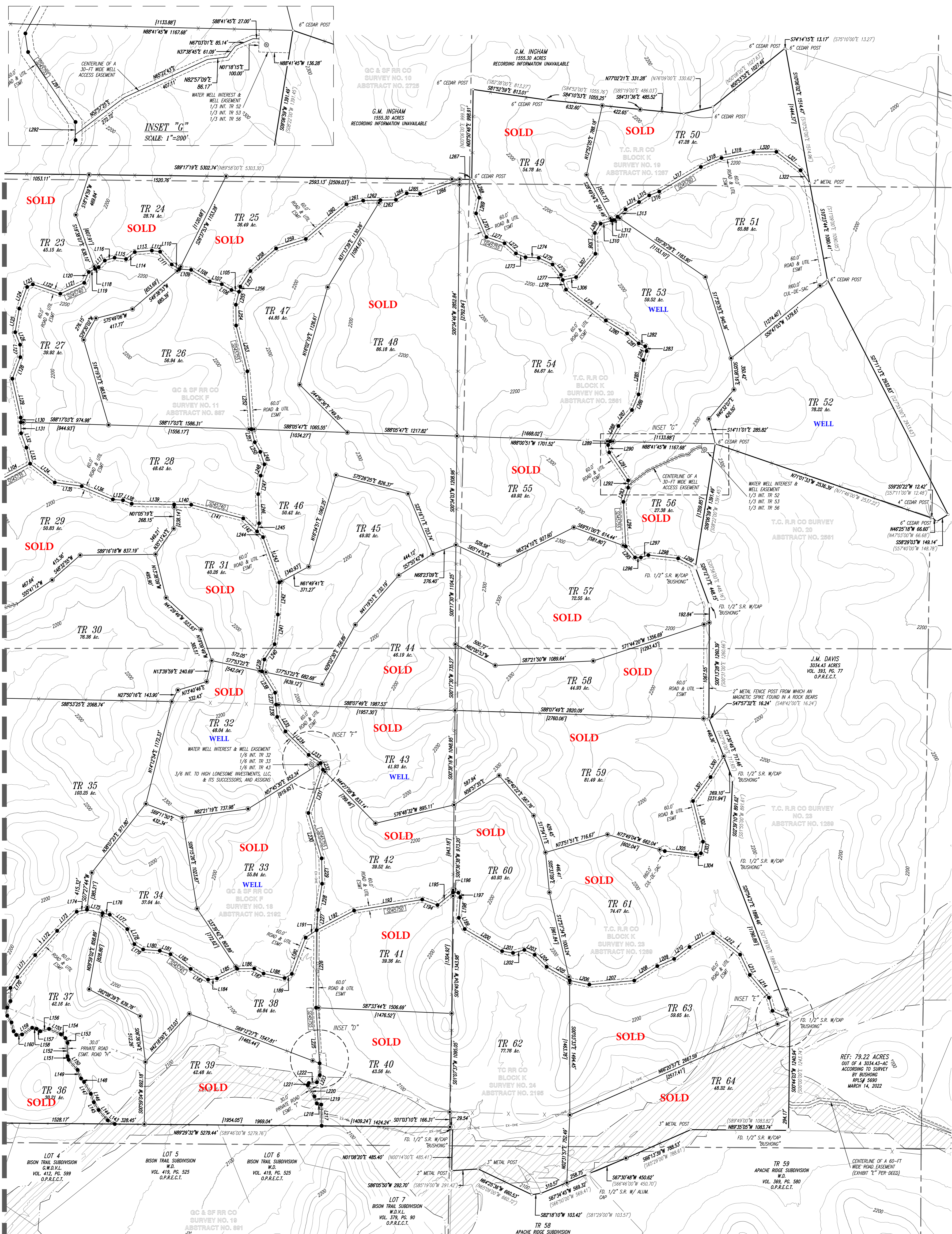
EXISTING WELL ±27' INSIDE FENCE ±15' OUTSIDE TITLE

±1.73-ACRES UNDER FENCE, OUTSIDE OF TITLE

INSET "C"

2" METAL POST





INSET "G"  
SCALE: 1"=200'

G.C. & S.F. RR CO  
SURVEY NO. 10  
ABSTRACT NO. 2725  
G.M. INGHAM  
1555.30 ACRES  
RECORDING INFORMATION UNAVAILABLE

T.C. R.R. CO  
BLOCK K  
SURVEY NO. 19  
ABSTRACT NO. 1287

G.C. & S.F. RR CO  
BLOCK F  
SURVEY NO. 11  
ABSTRACT NO. 887

T.C. R.R. CO  
BLOCK K  
SURVEY NO. 20  
ABSTRACT NO. 2581

T.C. R.R. CO SURVEY  
NO. 20  
ABSTRACT NO. 2581

J.M. DAVIS  
3034.43 ACRES  
VOL. 383, PG. 77  
O.P.R.E.C.T.

T.C. R.R. CO SURVEY  
NO. 23  
ABSTRACT NO. 1288

T.C. R.R. CO  
BLOCK K  
SURVEY NO. 23  
ABSTRACT NO. 1288

REF: 79.22 ACRES  
OUT OF A 3034.43-AC  
ACCORDING TO SURVEY  
BY BUSHONG  
RPL# 5690  
MARCH 14, 2022

LOT 4  
BISON TRAIL SUBDIVISION  
W.D.V.L.  
VOL. 412, PG. 599  
O.P.R.E.C.T.

LOT 5  
BISON TRAIL SUBDIVISION  
W.D.V.L.  
VOL. 412, PG. 525  
O.P.R.E.C.T.

LOT 6  
BISON TRAIL SUBDIVISION  
W.D.V.L.  
VOL. 419, PG. 525  
O.P.R.E.C.T.

LOT 7  
BISON TRAIL SUBDIVISION  
W.D.V.L.  
VOL. 379, PG. 90  
O.P.R.E.C.T.

G.C. & S.F. RR CO  
SURVEY NO. 18  
ABSTRACT NO. 891

TR 58  
APACHE RIDGE SUBDIVISION

TR 59  
APACHE RIDGE SUBDIVISION  
W.D.V.L.  
VOL. 369, PG. 580  
O.P.R.E.C.T.

CENTERLINE OF A 60-FT  
WIDE ROAD EASEMENT  
(EXHIBIT "E" PER DEED)